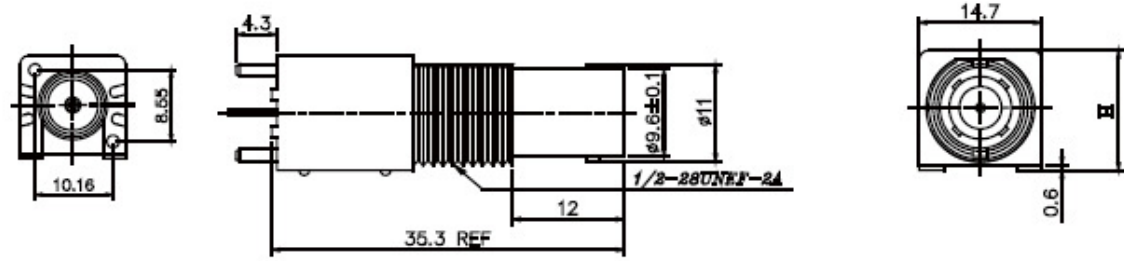


# BNC Conn. Series

## Material & Finish

Body: Zinc Alloy Nickel Plating  
 Insulator: PBT  
 Center Contact : Phosphor Bronze , Gold Plating  
 Mounting Post: Phosphor Bronze / Tin Plating



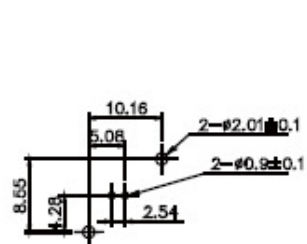
**BNCS005-F**  **GW**  **-L**  
 5: 50 Ω 7: 75 Ω  
 2: H=13.16mm  
 3: H=15.8mm



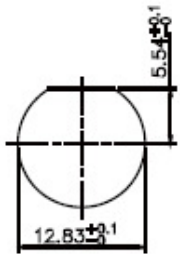
LOCK WASHER



1/2-28UNEF-2B  
CLAMP NUT



RECOMMENDED PC BOARD LAYOUT  
WITHOUT MOUNTING POSTS



RECOMMENDED MOUNTING HOLE  
MAXIMUM PANEL THICKNESS: 5.6MM

**TOPTEK**  
 HARDWARE ELECTRONIC COMPONENTS



www.toptek-co.com